

Child's Mitten Back

- Cut 1 for each hand
- Reverse for opposite hand
- enlarge to fit

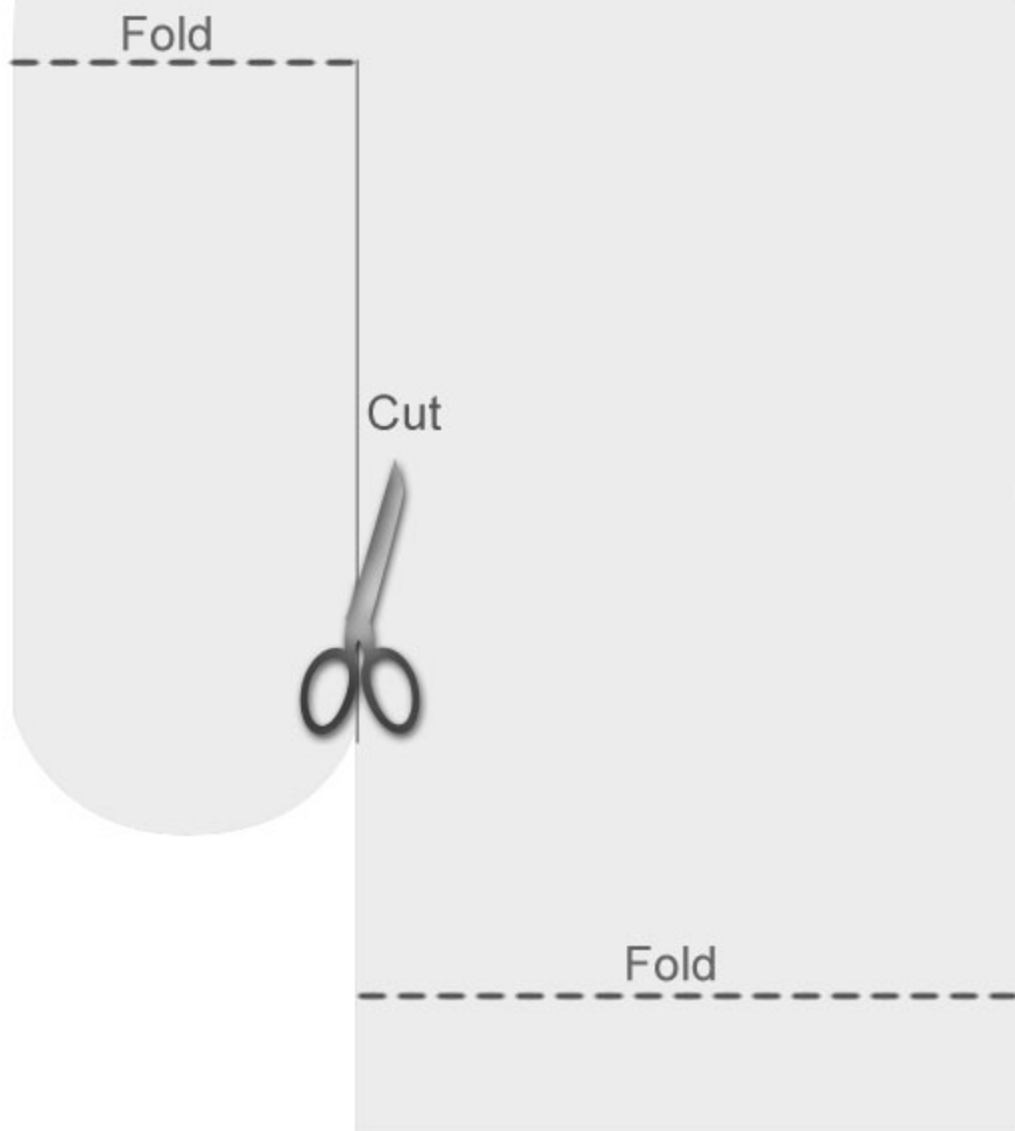
Seam A

The diagram shows a light gray pattern for the back of a child's mitten. The pattern is roughly rectangular with a rounded top and a small notch at the bottom right. A dashed horizontal line near the bottom is labeled 'Fold Line'. A diagonal line on the right side is labeled 'Seam A'.

Fold Line

Child's Mitten Palm

- Cut 1 for each hand
- Reverse for opposite hand
- enlarge to fit





Child's Mitten Thumb

- Cut one for each hand
- reverse for opposite hand
- enlarge to fit

Seam A

Fold