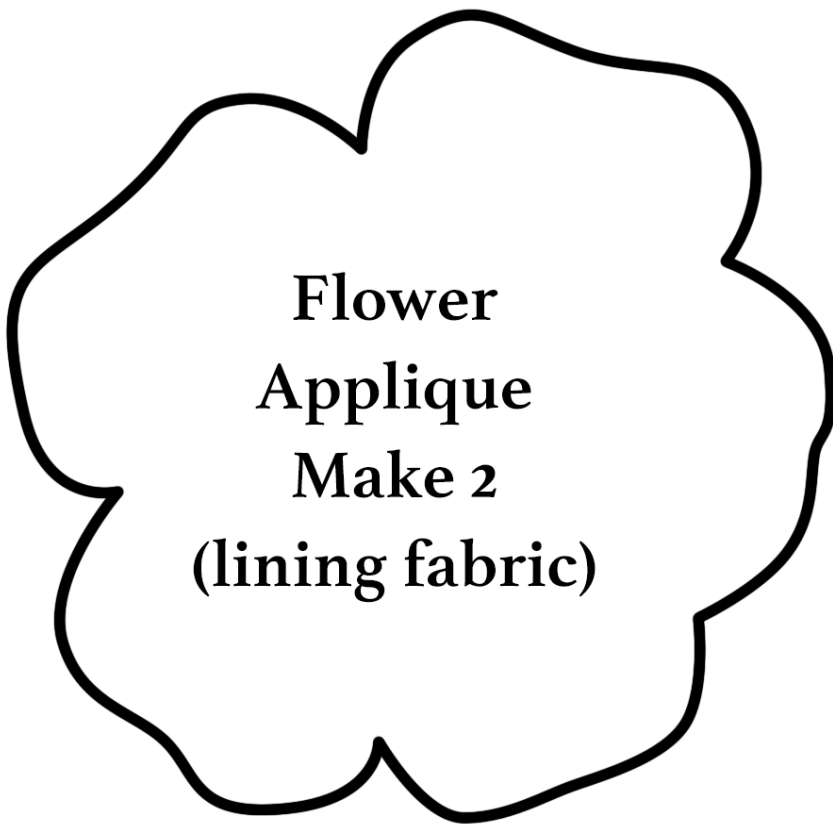


Laptop Case Pattern



Flower
Applique
Make 2
(lining fabric)

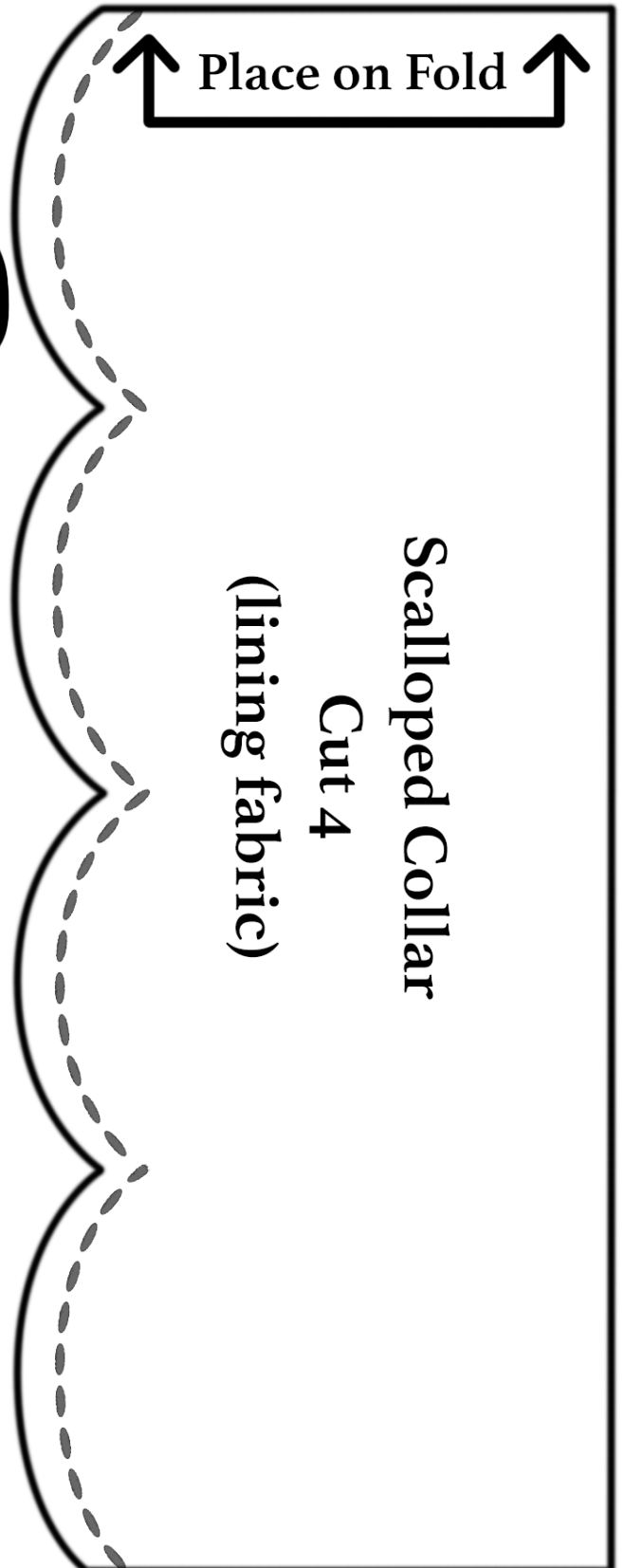
Body: 12 3/4-inches by 17 1/4-inches
Cut 2 from quilted fabric.
Cut 2 from lining fabric.

Pocket and Flap: 8 1/2-inches by 17 1/4-inches
Cut 2 from quilted fabric-one pocket and flap.
Cut 1 from lining fabric for flap.

Pocket Lining: 10-inches by 17 1/4-inches
Cut 1 from lining.

Shoulder Strap: 2 1/2-inches by 44-inches
Cut 1 from quilted fabric.
Cut 1 from lining fabric.

Handles: 2 1/2-inches by 12 1/2-inches
Cut 2 from quilted fabric.
Cut 2 from lining fabric.



Place on Fold

Scalloped Collar
Cut 4
(lining fabric)