

Cell Comparison Answer Sheet

1. Choose the correct definition for each cell part and write the correct letter in the answer column. Number One (Nucleus) has been completed as an example. : Answer Key

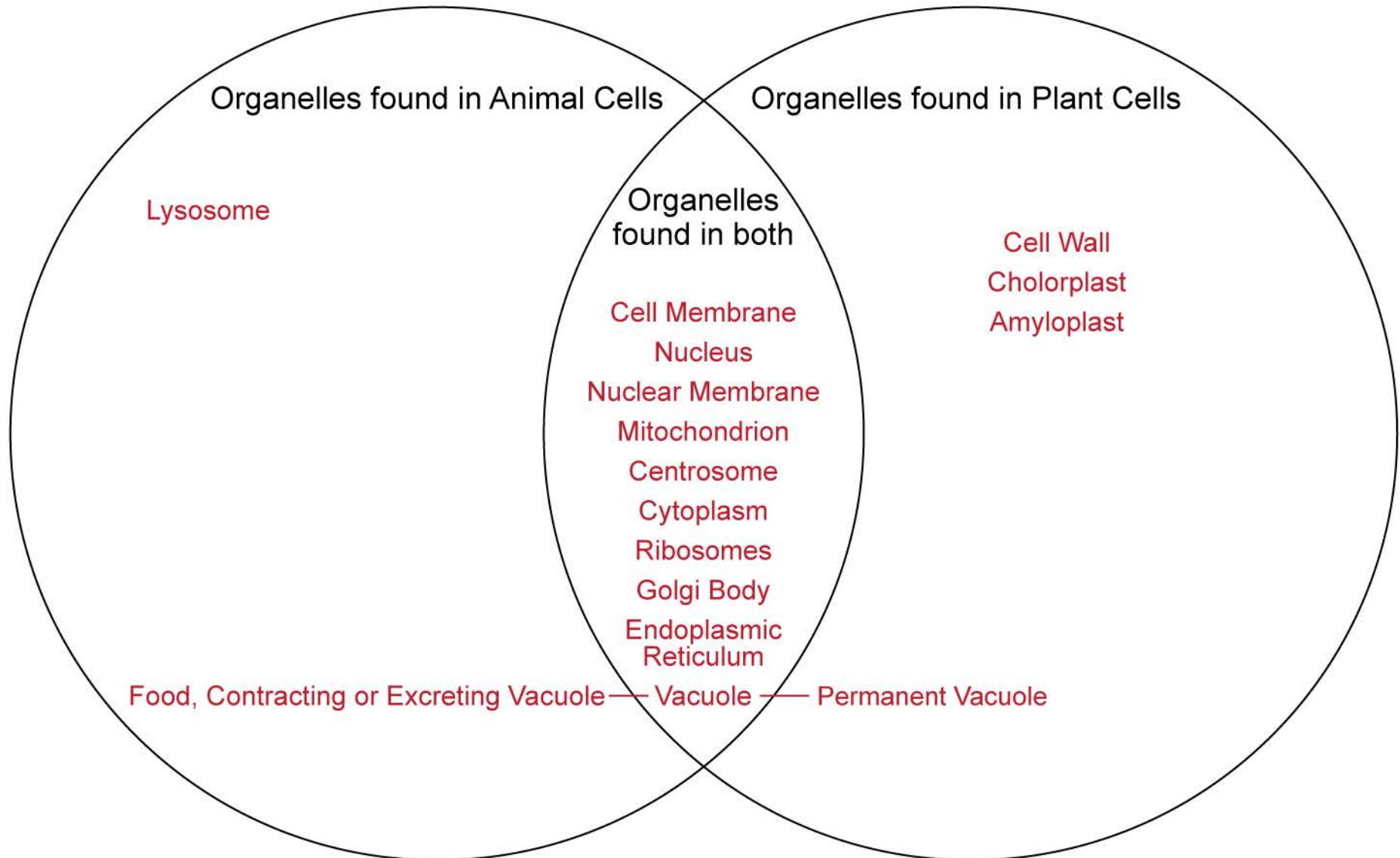
	Definitions
A	Transports materials through the cell
B	It replicates just before the cell divides and plays a role in ensuring that the two sets of chromosomes stay on the opposite sides and thus end up in both new cells
C	Stores starch
D	It holds up the other parts within the cell
E	It supports the cell and holds its shape
F	Control center or “brain” of the cell
G	The site of protein synthesis
H	Holds enzymes and digests things for the cell
I	It is where RNA (ribonucleic acid) is made
J	Found in plants and filled with cell sap to keep the cell turgid or found in some protozoa and help control water intake and output or help to break food down
K	Keeps the DNA (Deoxyribonucleic acid) safe inside the nucleus
L	Transports protien and carbohydrates for “export” from the cell
M	It selects what enters and exits the cell
N	The site of photosynthesis within the cell
O	The site of energy creation within the cell

	Answer
Nucleus	F
Mitochondria	O
Cell Membrane	M
Cytoplasm	D
Vacuole	J
Cell Wall	E
Chloroplasts	N
Endoplasmic Reticulum	A
Ribosomes	G
Golgi bodies/apparatus	L
Lysosome	H
Centrosome	B
Nuclear Membrane	K
Nucleolus	I
Amyloplast	C

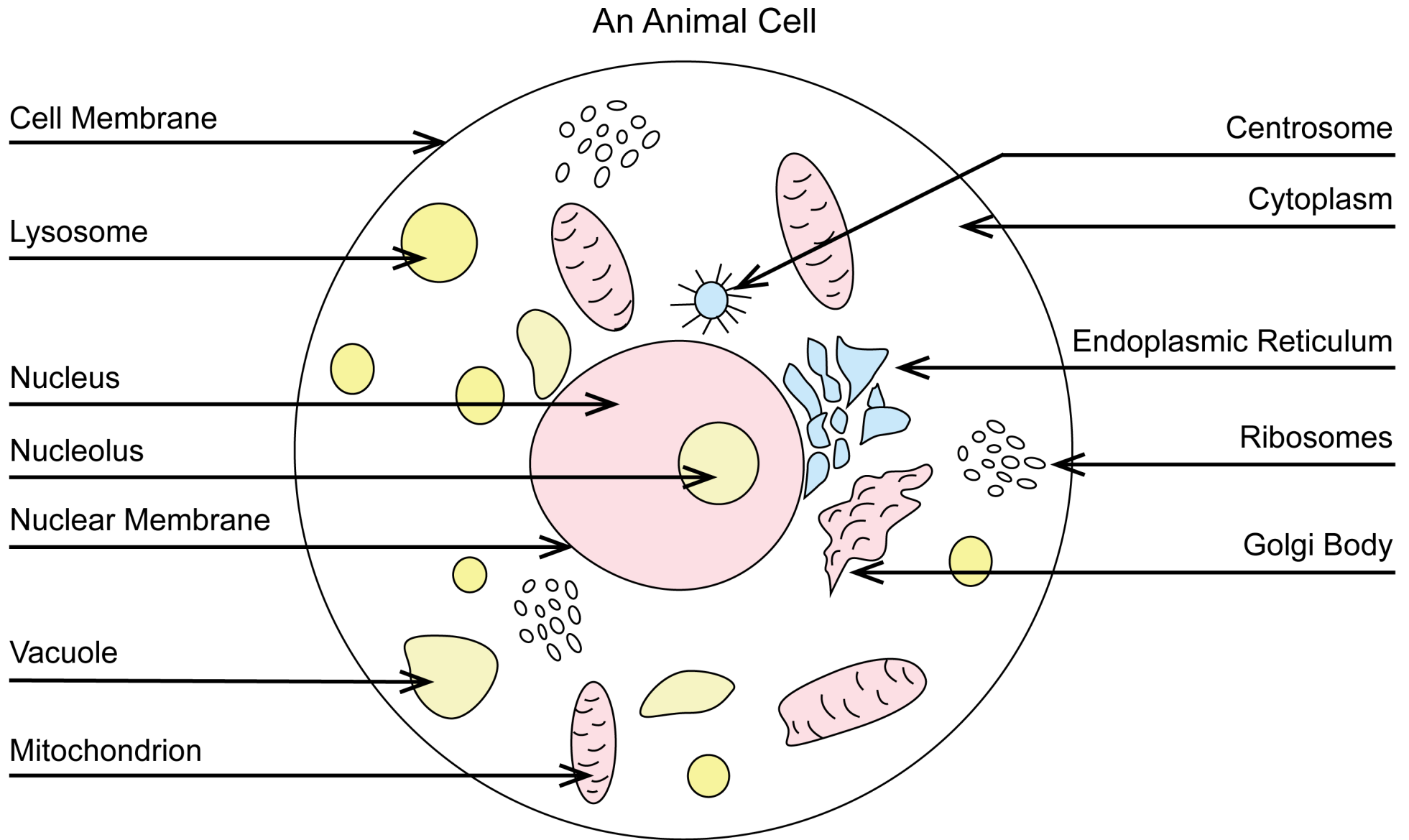
Cell Comparison Answer Sheet

Compare and Contrast the Structure of Plant and Animal Cells

2. Complete the Venn diagram using your diagram labels : Answer Key



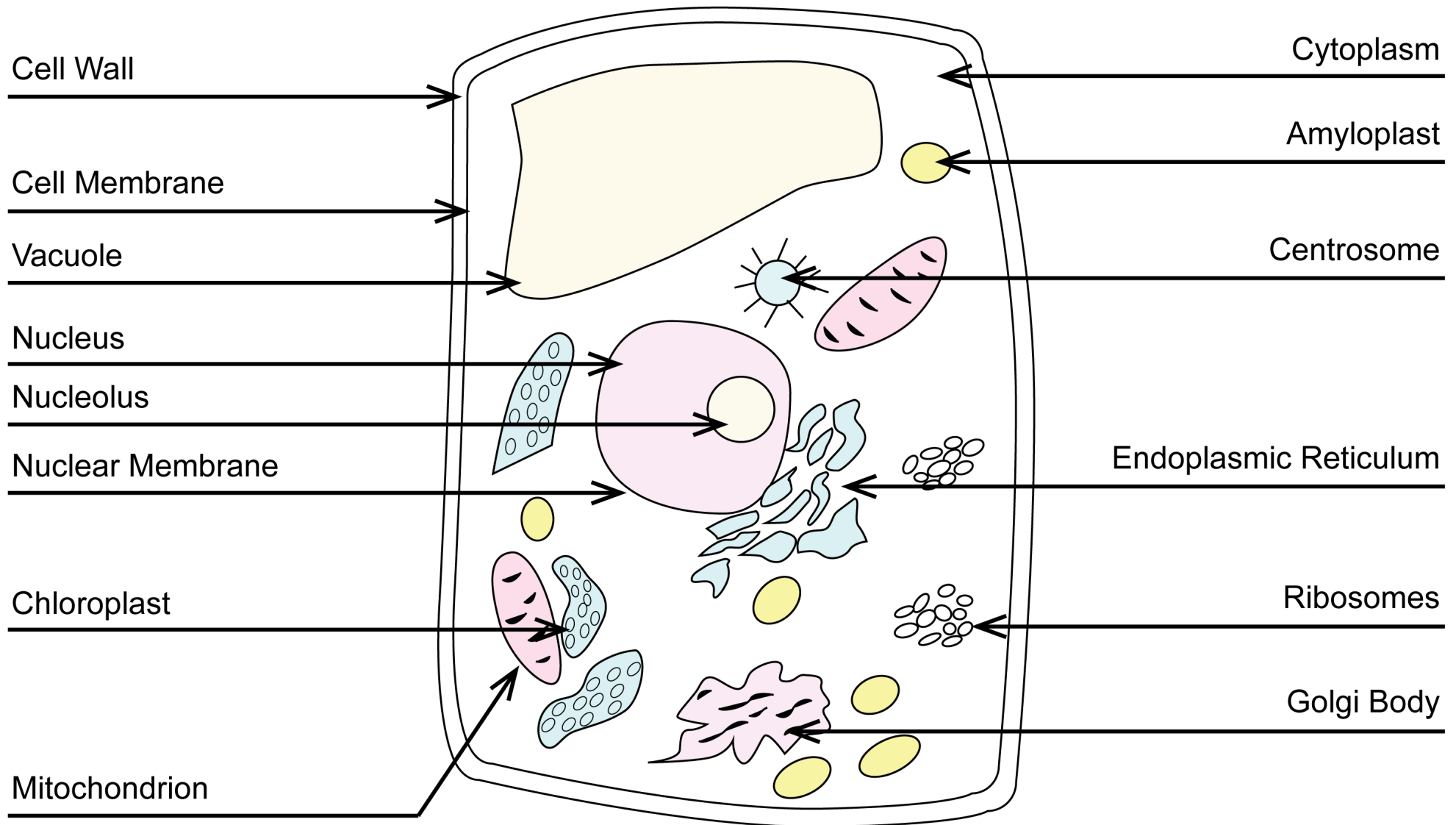
Cell Comparison Answer Sheet



Label the animal cell parts : Answer Key

Cell Comparison Answer Sheet

A Plant Cell



Label the plant cell parts : Answer Key