

Hot Dog Costume

Things You'll Need

- One yard of tan fleece fabric
- Half a yard of reddish brown fleece fabric
- One quarter yard of red jersey knit fabric
- Synthetic stuffing
- One yard of black one-inch wide elastic
- Two black hook and loop closures
- Sewing machine and thread
- Hand sewing needle
- Pins
- Scissors

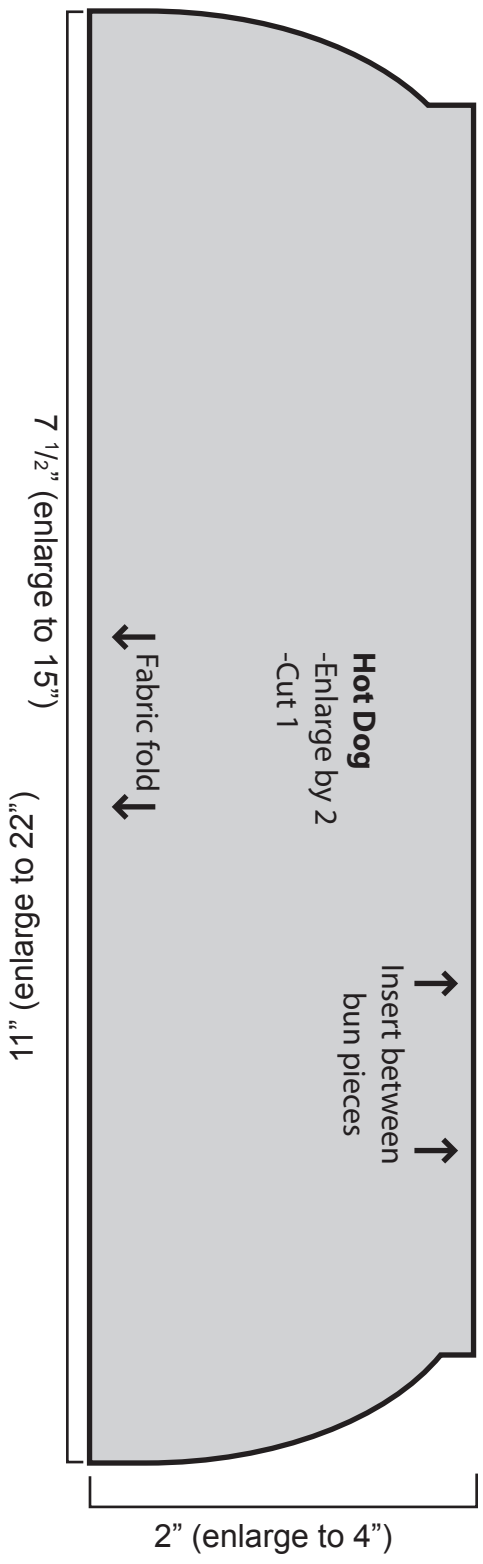
What to Do

1. Enlarge the pattern as directed.
2. Cut out four bun pieces from the tan fleece. Cut out one hot dog piece from the reddish brown fleece, aligning the fold mark on the pattern with the fold on the fabric. Cut out one ketchup piece from the jersey.
3. Place one bun piece right side up on your work surface. Place the hot dog piece so that the long side lines up with the long side of the bun. Place another bun piece on top, right side down. Pin and sew together with a $\frac{1}{2}$ - inch seam allowance.
4. Repeat with the other side of the hot dog piece.
5. Sew almost all the way around both sides of the bun pieces, leaving about six inches open for turning.
6. Turn both buns right side out. Stuff with the synthetic stuffing, and hand stitch to close up the opening. You now have two saddle bag-style hot dog buns.
7. Fold the red jersey piece in half lengthwise and sew up one end and the long side, using a $\frac{1}{2}$ -inch seam allowance. Turn it right side out.
8. Stuff the tube with synthetic stuffing, but don't make it too firm. Sew up the end.
9. Arrange the ketchup piece in a squiggle along the reddish brown hot dog piece and hand sew in place.
10. Cut the elastic into two pieces. Attach one side of one piece at the front of the dog's neck, near one end of the bun. Attach one side of the other piece on the side of the bun so it will extend under the dog's chest.
11. Try the costume on your dog and trim the elastic to the appropriate length. Add a hook and loop closure to the end of each elastic piece and sew the other part of the closure on the corresponding spot on the costume.



Ketchup
-Enlarge by 2
-Cut 1

1 1/2" (enlarge to 3")



↓ Fabric fold ↑

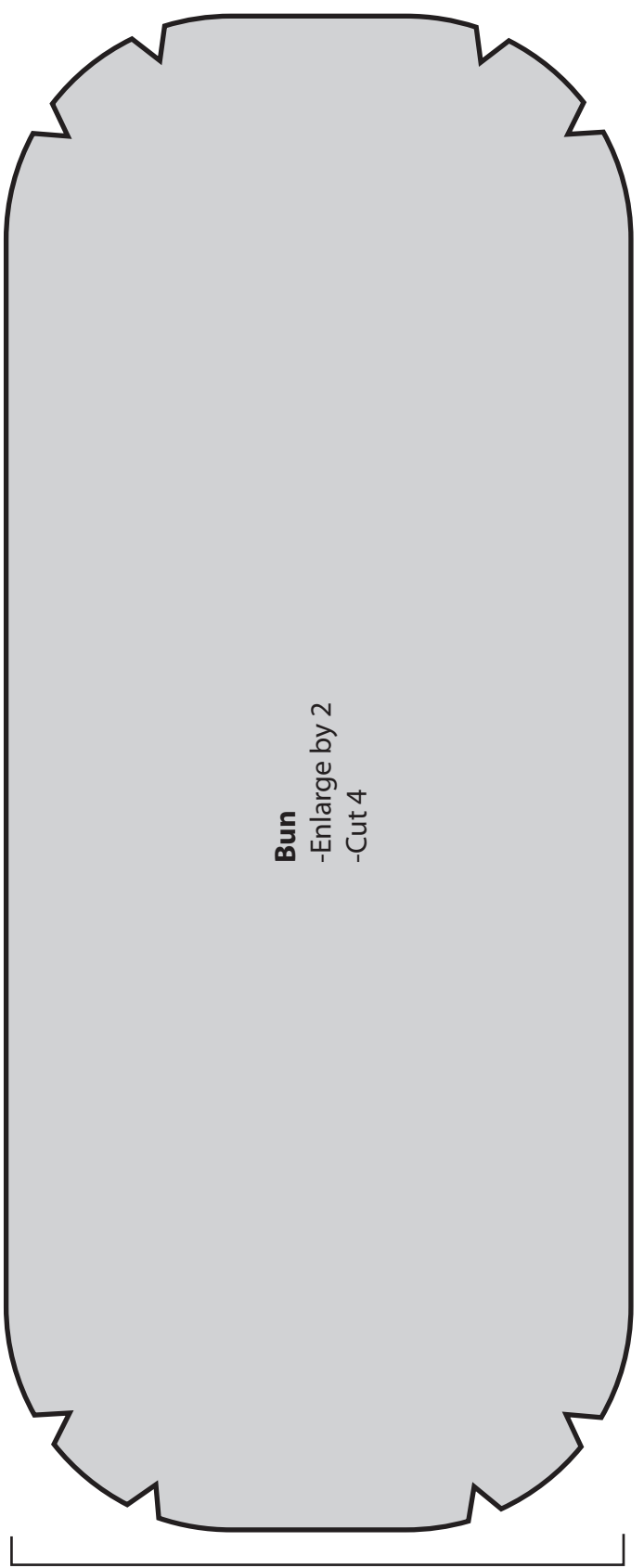
Hot Dog
-Enlarge by 2
-Cut 1

↑ Insert between bun pieces ↑

7 1/2" (enlarge to 15")

11" (enlarge to 22")

2" (enlarge to 4")



Bun
-Enlarge by 2
-Cut 4

3 1/2" (enlarge to 7")

8 1/2" (enlarge to 17")